

FEATURES AND SPECIFICATIONS

Features and Benefits

- Snap-in peg locks header to PCB for optimum retention
- Fully polarized to mating receptacle
- Surface Mount Compatible

Reference Information

Product Specification: PS-43045

Packaging: Tray

UL File No.: E29179

CSA File No.: LR19980

TUV License No.: R95107

Mates With: 43025

Designed In: Millimeters

Electrical

Voltage: 250V

Current: 5.0A max.

Contact Resistance: 10mΩ max.

Dielectric Withstanding Voltage: 1500V AC

Insulation Resistance: 1000 MΩ min.

Mechanical

Insertion Force to PCB: 7.5kgf max. (16.5 lb)

Physical

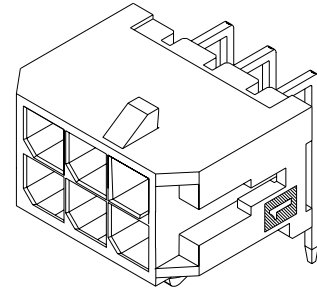
Housing: High temperature LCP, UL 94V-0

Contact: Phosphor Bronze

Plating: Tin or Gold

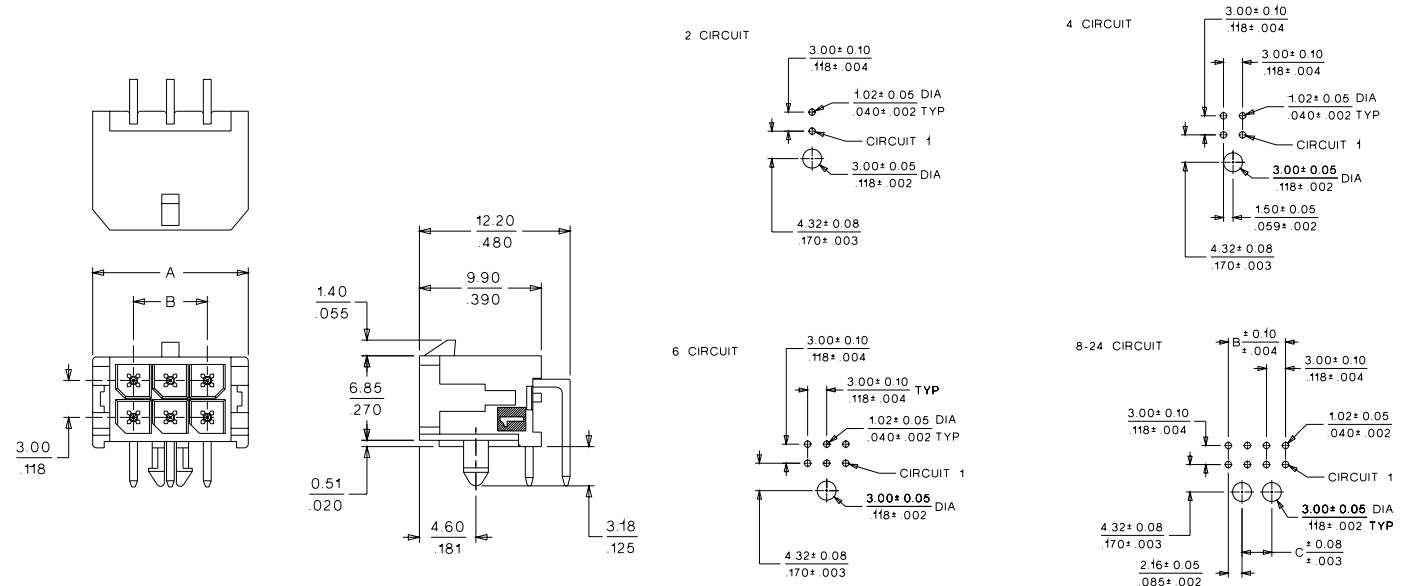
molex® 3.00mm (.118") Pitch Micro-Fit 3.0™ Wire-to-Board Header

43045 Dual Row Right Angle



PCB and Wire Connectors

J



ORDERING INFORMATION AND DIMENSIONS

| Circuits | Order No. | | | Dimension | | | Overall Height When Mated With: | |
|----------|--------------|------------|--------------|---------------|---------------|---------------|---------------------------------|--------------|
| | Tin | 15µ" Gold | 30µ" Gold | A | B | C | 43025 | 10.29 (.405) |
| 2 | • 43045-0200 | 43045-0201 | • 43045-0202 | 6.65 (.262) | | | 43025 | 10.29 (.405) |
| 4 | • 43045-0400 | 43045-0401 | • 43045-0402 | 9.65 (.380) | 3.00 (.118) | | 43025 | 10.29 (.405) |
| 6 | • 43045-0600 | 43045-0601 | • 43045-0602 | 12.65 (.498) | 6.00 (.236) | | 43025 | 10.29 (.405) |
| 8 | • 43045-0800 | 43045-0801 | • 43045-0802 | 15.65 (.616) | 9.00 (.354) | 4.70 (.185) | 43025 | 10.29 (.405) |
| 10 | • 43045-1000 | 43045-1001 | • 43045-1002 | 18.65 (.734) | 12.00 (.472) | 7.70 (.303) | 43025 | 10.29 (.405) |
| 12 | • 43045-1200 | 43045-1201 | • 43045-1202 | 21.65 (.852) | 15.00 (.591) | 10.70 (.421) | 43025 | 10.29 (.405) |
| 14 | • 43045-1400 | 43045-1401 | • 43045-1402 | 24.65 (.970) | 18.00 (.709) | 13.70 (.539) | 43025 | 10.29 (.405) |
| 16 | • 43045-1600 | 43045-1601 | • 43045-1602 | 27.65 (1.088) | 21.00 (.827) | 16.70 (.657) | 43025 | 10.29 (.405) |
| 18 | • 43045-1800 | 43045-1801 | • 43045-1802 | 30.65 (1.206) | 24.00 (.945) | 19.70 (.776) | 43025 | 10.29 (.405) |
| 20 | • 43045-2000 | 43045-2001 | • 43045-2002 | 33.65 (1.325) | 27.00 (1.063) | 22.70 (.894) | 43025 | 10.29 (.405) |
| 22 | • 43045-2200 | 43045-2201 | • 43045-2202 | 36.65 (1.443) | 30.00 (1.181) | 25.70 (1.012) | 43025 | 10.29 (.405) |
| 24 | • 43045-2400 | 43045-2401 | • 43045-2402 | 39.65 (1.561) | 33.00 (1.299) | 28.70 (1.130) | 43025 | 10.29 (.405) |

• US Standard Product, available through Molex franchised distributors